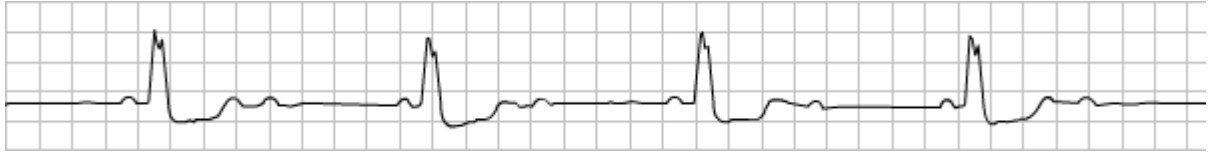


AKT: 1: Concerning the following ECG and the list of available options. Select the correct answer



- a. Atrial Flutter
- b. Ventricular Fibrillation
- c. Premature Atrial Complex
- d. 2nd Degree AV Block
- e. Complete Heart Block
- f. Mobitz type I

AKT: 2: Which ONE of the following most closely matches the incubation period for Whooping Cough?

0 - 5 days 15 - 30 days 5 - 15 days > 30 days none of the above

AKT:3: Intracranial Malignancy

A 57 year old gentleman well known to you presents to your clinic complaining of increasing headaches. He has an inoperable end-stage primary glioblastoma with raised intracranial pressure. What would you prescribe to help with his pain?

Amitriptyline

Dexamethasone

Paracetamol

Tramadol

Voltarol

CSA scenario: Mrs Jones is 36.

Her records show that she is about 19 weeks pregnant and attending the antenatal clinic regularly

Apart from minor URTIs she is rarely seen.

There is nothing in the records to indicate why she is coming to see you today

Past medical history:

Appendicitis age 11

Miscarriage age 34

Reasons for attendance: when you start the consultation you quickly establish her reason for coming....

She has been in contact in the school playground with a friend's child who has turned out to have slapped cheek syndrome.

She is highly anxious and wants reassurance that her pregnancy will be OK.

She wonders if she needs any tests

..... you have 10 minutes to deal with this scenario.